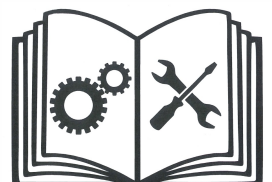


BWK

Erbicida professionale ad acqua calda
Professional hot water weed removal system
Heißwasser-Unkrautvernichter für den gewerblichen Einsatz
Désherbeur professionnel à eau chaude
Professionele heetwater onkruidbestrijdingsmachine



L-LC067.02-BM



EXPLODED VIEW

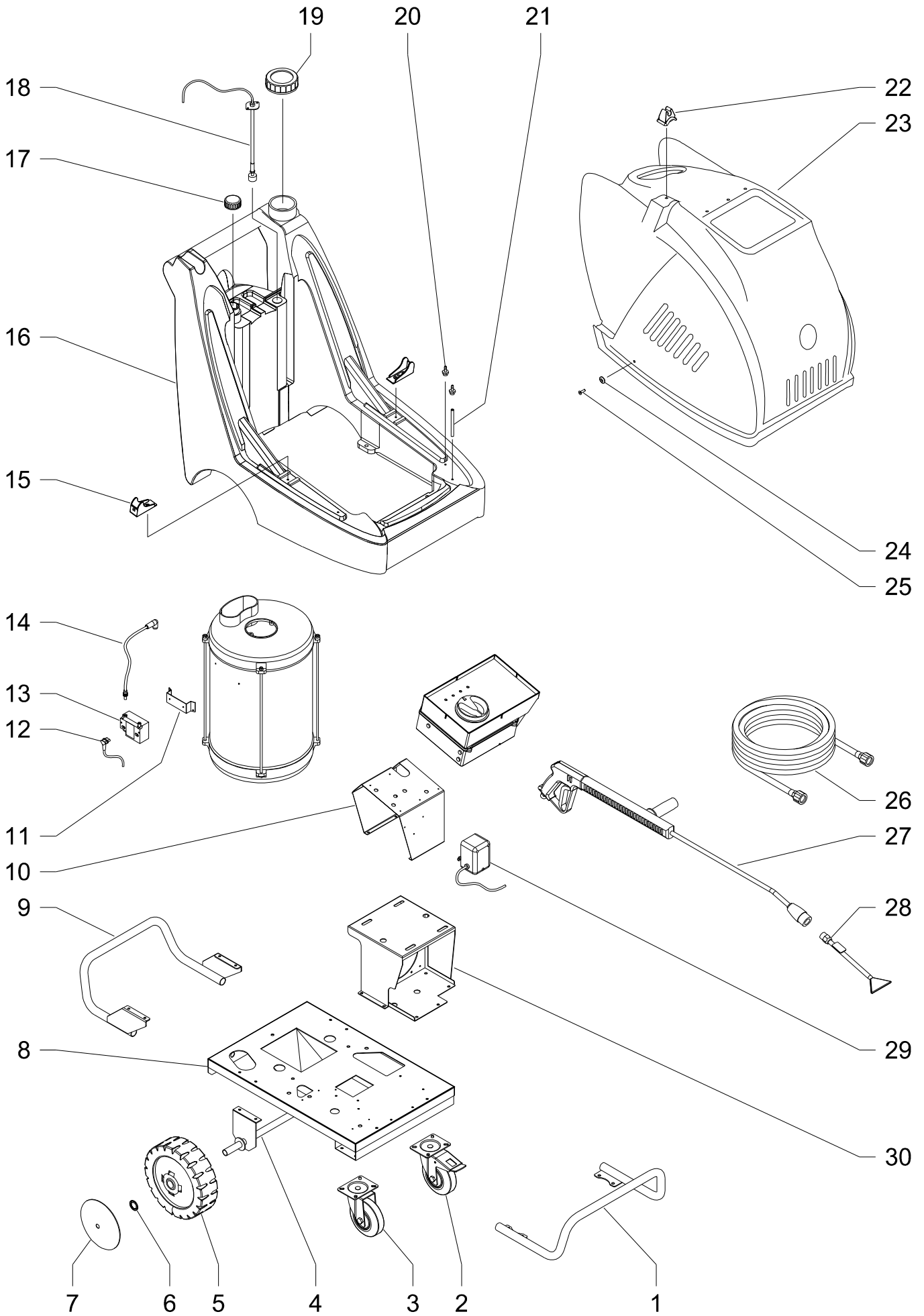


TABLE N° EXPL00156

SPARE PARTS LIST

LAM. BWK

19/10/2016

REF	CODE	QTY	DESCRIPTION	DENOMINATION	BESCHREIBUNG	DESCRIPCION	DESCRIZIONE	TECNICAL FEATURES		
01	01AC519	01	BUMPER	PARE CHOC	KOTFLUGEL	PARACHOQUE	PARAURTI			
02	C10538	01	WHEEL	ROUE	LAUFRAD	RUEDA	RUOTA			
03	B. RUOT00031	01	WHEEL	ROUE	LAUFRAD	RUEDA	RUOTA			
04	L01244	01	AXLE	AXE	ACHESE	EJE	ASSE			
05	C10531G	02	WHEEL	ROUE	LAUFRAD	RUEDA	RUOTA			
06	C10531	02	WASHER	RONDELLE	DICHTUNG	ARANDELLA	RONDELLA			
07	C10532	02	WHEEL COVER	COUVRE TOURNE	VERLANGERUNG	EMBELLECEDOR	COPRIRUOTA			
08	B. CRVR00702	01	FRAME	CHASSIS	GERUST	CHASIS	TELAIO			
09	01AC520	01	BUMPER	PARE CHOC	KOTFLUGEL	PARACHOQUE	PARAURTI			
10	B. CRZN00689	01	SUPPORT	SUPPORT	HALTER	SOPORTE	SUPPORTO			
11	B. CRZN00669	01	BRACKET	ENTRIER	BUGEL	GRAPA	STAFFA			
12	B. MECV00063	01	CABLE	CABLE	KABEL	CABLE	CAVO			
13	B. METR00018	01	TRANSFORMER	TRANSFORMATEUR	TRANSFORMER	TRANSFORMADOR	TRASFORMATORE			
14	B. MECV00062	01	CABLE	CABLE	KABEL	CABLE	CAVO			
15	B. PLDS00323	02	BRACKET	ENTRIER	BUGEL	GRAPA	STAFFA			
16	P50118	01	TANK	RESERVOIR	TANK	DEPOSITO	SERBATOIO			
17	P50122	01	CAP	BOUCHON	VERSCHLUSS	TAPPO	TAPPO			
18	B. MEIP00074	01	SWITCH	INTERRUPTEUR	SCHALTER	INTERRUPTOR	INTERRUTTORE			
19	P50108	01	CAP	BOUCHON	VERSCHLUSS	TAPPO	TAPPO			
20	B. RCVR00172	02	HOSE FITTING	RACC. P. TUYAU	SCHLAUCH HALTER	PORTAMANGUERA	PORTAGOMMA			
21	I40306	01	HOSE	TUYAU	ROHR	TUBO	TUBO			
22	B. PLDS00325	01	SUPPORT	SUPPORT	HALTER	SOPORTE	SUPPORTO			
23	B. PLDS00330	01	HOOD	CAPOT	HAUBE	COFRE	COFANO			
24	B. VTRD00001	02	WASHER	RONDELLE	DICHTUNG	ARANDELLA	RONDELLA			
25	B. VTVT00289	02	SCREW	VIS	SCHRAUBE	TORNILLO	VITE			
26	01AC398	01	HOSE	TUYAU	ROHR	TUBO	TUBO			
27	01AC546	01	GRIP	POIGNEE	HANDGRIFF	EMPUNADURA	IMPUGNATURA			
28	B. RCVR00246	01	LANCE	LANCE	LANZEN	LANZA	LANCIA			
29	I10703	01	DISPENSER	DISTRIBUTEUR	DISPENSER	DISPENSADOR	DOSATORE			
30	B. CRVR00713	01	SUPPORT	SUPPORT	HALTER	SOPORTE	SUPPORTO			

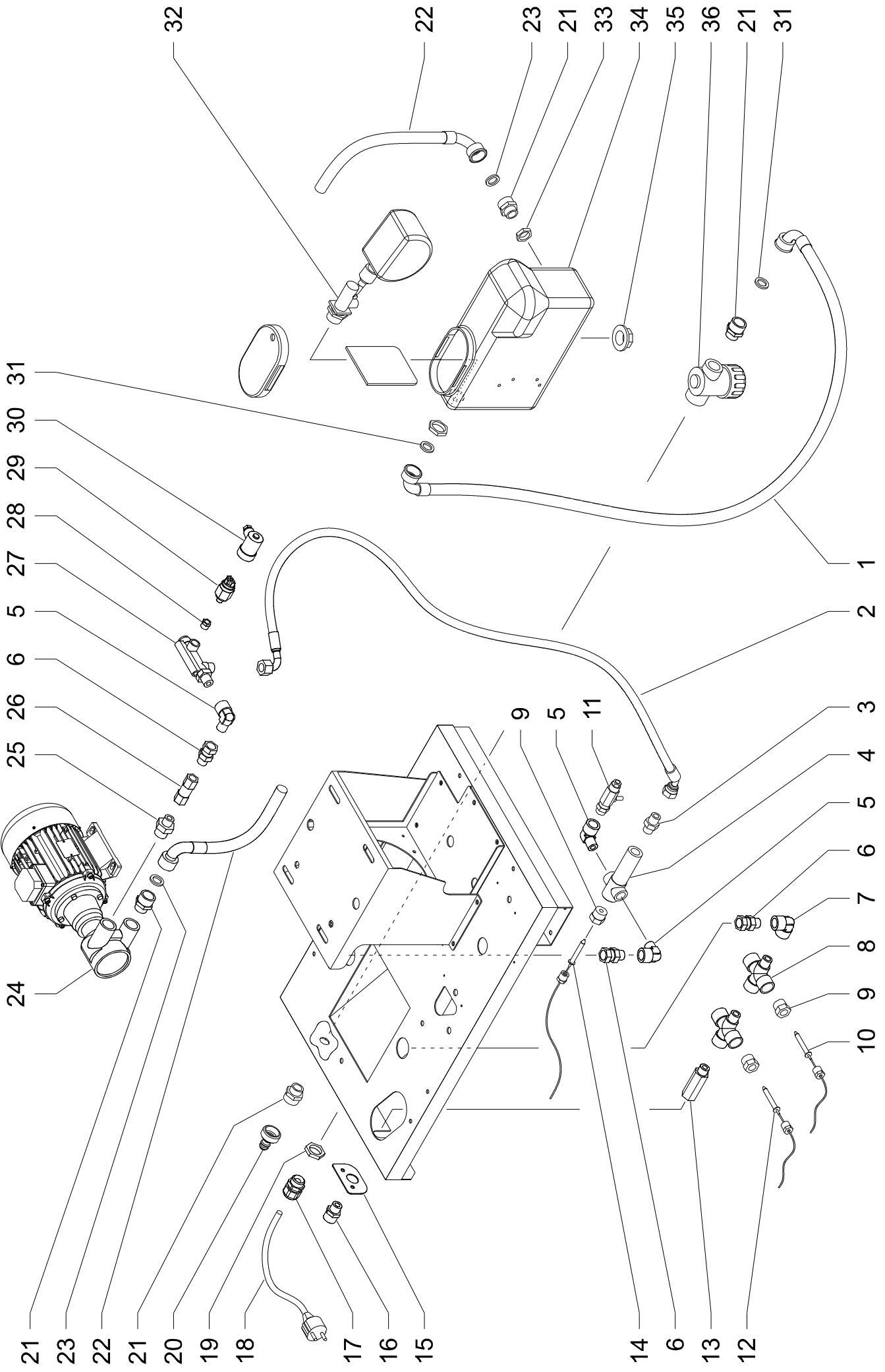


TABLE N° EXPL00157

SPARE PARTS LIST

BWK POMPA MOTORE

29/03/2017

REF	CODE	QTY	DESCRIPTION	DENOMINATION	BESCHREIBUNG	DESCRIPCION	DESCRIZIONE	TECNICAL FEATURES		
01	B. TURR00023	01	HOSE	TUYAU	ROHR	TUBO	TUBO			
02	B. TURR00022	01	HOSE	TUYAU	ROHR	TUBO	TUBO			
03	I20102	01	NIPPLE	NIPPLE	NIPPEL	NIPLO	NIPPLO			
04	I30733	01	CONNECTOR	RACCORD	VERBIND. STUCK	RACORD	RACCORDO			
05	I30711	02	CONNECTOR	RACCORD	VERBIND. STUCK	RACORD	RACCORDO			
06	I20602	03	CONNECTOR	RACCORD	VERBIND. STUCK	RACORD	RACCORDO			
07	I31201	01	CONNECTOR	RACCORD	VERBIND. STUCK	RACORD	RACCORDO			
08	B. RCVR00194	02	CONNECTOR	RACCORD	VERBIND. STUCK	RACORD	RACCORDO			
09	I30307	03	REDUCTION	RÉDUCTION	VERKLEINERUNG	REDUCCIÓN	RIDUZIONE			
10	B. MEIP00051-1	01	THERMOSTAT	THERMOSTAT	THERMOSTAT	TERMOSTATO	TERMOSTATO			
11	I10433	01	VALVE	SOUPAPE	VENTIL	VALVULA	VALVOLA			
12	B. MEIP00054-1	01	THERMOSTAT	THERMOSTAT	THERMOSTAT	TERMOSTATO	TERMOSTATO			
13	I30734	01	EXTENSION	RALLONGE	VERLANGERUNG	PROLONGACION	PROLUNGA			
14	B. MEIP00072	01	THERMOSTAT	THERMOSTAT	THERMOSTAT	TERMOSTATO	TERMOSTATO			
15	B. CRDS00931	01	BRACKET	ENTRIER	BUGEL	GRAPA	STAFFA			
16	I20920	01	CONNECTOR	RACCORD	VERBIND. STUCK	RACORD	RACCORDO			
17	B. MEVR00291	01	CABLE CLAMP	COLLIER	KABELSCHELLE	ABRAZADERA CABL	PRESSACAVO			
18	B. MECV00039	01	CABLE	CABLE	KABEL	CABLE	CAVO			
19	B. MEVR00292	01	RING NUT	FRETTE	NUTMUTTER	CASQUILLO	GHIERA			
20	B. RCVR00169	01	CONNECTOR	RACCORD	VERBIND. STUCK	RACORD	RACCORDO			
21	B. RCVR00173	02	CONNECTOR	RACCORD	VERBIND. STUCK	RACORD	RACCORDO			
22	B. TURR00024	01	HOSE	TUYAU	ROHR	TUBO	TUBO			
23	B. GUAR00152	02	GASKET	GARNITURE	DICHTUNG	GUARNICION	GUARNIZIONE			
24	B. MTPM00021	01	MOTOR-PUMP	MOTOPOMPE	MOTOR-PUMPEN	MOTOBOMBA	MOTORE-POMPA			
25	I20105	01	NIPPLE	NIPPLE	NIPPEL	NIPLO	NIPPLO			
26	B. VLRG00040	01	VALVE	SOUPAPE	VENTIL	VALVULA	VALVOLA			
27	B. MEFL00007	01	FLOW SWITCH	FLUSSOSTAT	STROMUNGSWACHTE	INT. DE FLUJO	FLUSSOSTATO			
28	I20202	01	REDUCTION	RÉDUCTION	VERKLEINERUNG	REDUCCIÓN	RIDUZIONE			
29	B. MEIP00075	01	PRESSURE SWITCH	PRESSOSTAT	DRUCKSCHALTER	INTERR. PRESIÓN	PRESSOSTATO			
30	B. MEVR00333	01	COVER	COUVERCLE	DECKEL	TAPA	COPERCHIO			
31	I20652	02	GASKET	GARNITURE	DICHTUNG	GUARNICION	GUARNIZIONE			
32	RCVR00241	01	TAP	ROBINET	ZAPFHahn	CANILLA	RUBINETTO			
33	B. RCVR00138	01	RING NUT	FRETTE	NUTMUTTER	CASQUILLO	GHIERA			
34	B. PLDS00326	01	TANK	RESERVOIR	TANK	DEPOSITO	SERBATOIO			
35	B. RCVR00186	01	RING NUT	FRETTE	NUTMUTTER	CASQUILLO	GHIERA			
36	I20506	01	FILTER	FILTRE	FILTER	FILTRO	FILTRO			

26/09/2016

GR. BOILER-FUN BWK

EXPLODED VIEW

TABLE N° EXPL00158

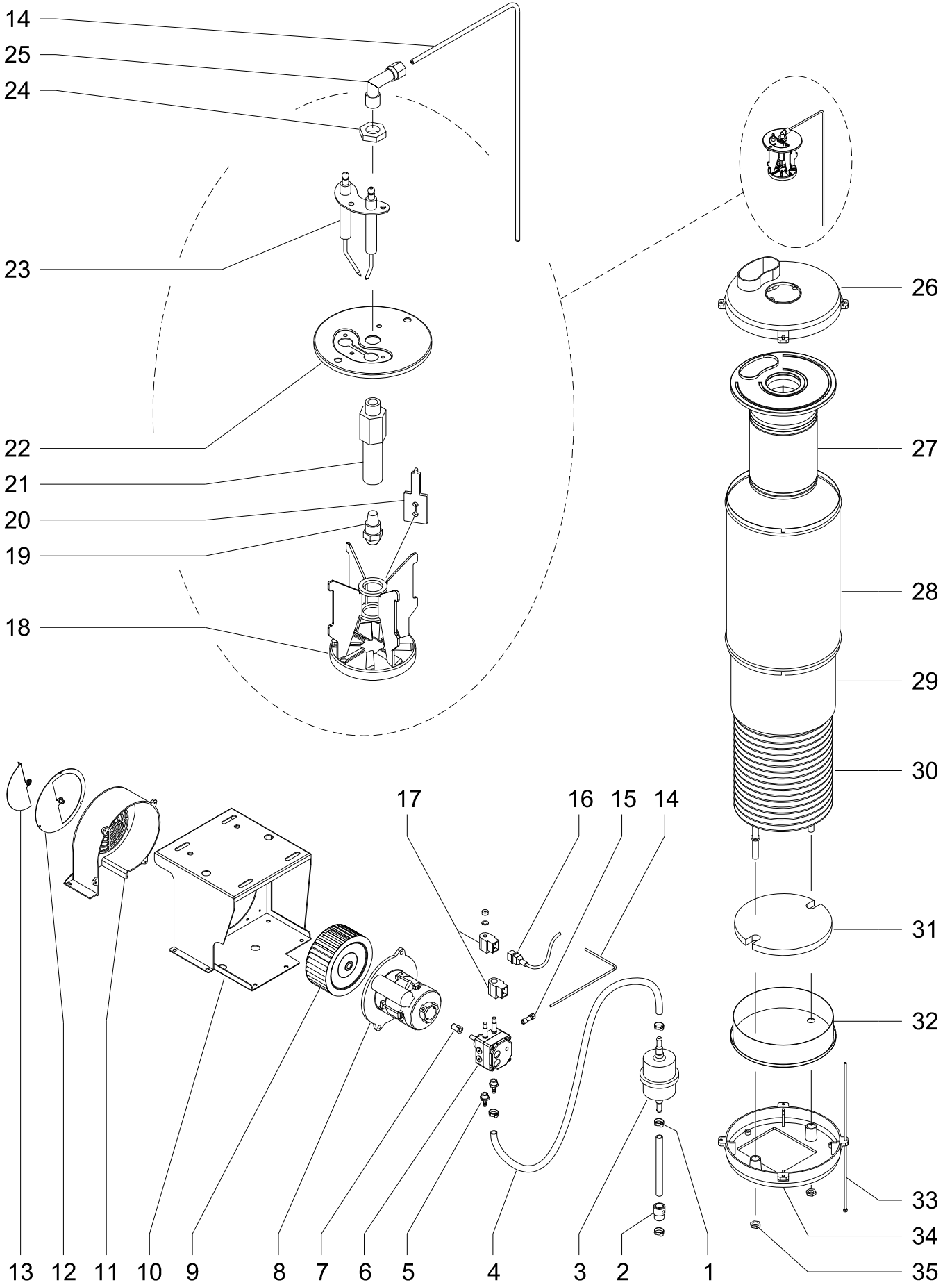


TABLE N° EXPL00158

SPARE PARTS LIST

GR. BOILER-FAN BWK

21/09/2016

REF	CODE	QTY	DESCRIPTION	DENOMINATION	BESCHREIBUNG	DESCRIPCION	DESCRIZIONE	TECNICAL FEATURES		
01	B. VTSP00110	06	RING	ANNEAU	RING	ANILLO	FASCETTA			
02	B. RCVR00182	02	TAP	ROBINET	ZAPFHAHN	CANILLA	RUBINETTO			
03	I30414	01	FILTER	FILTRE	FILTER	FILTRO	FILTRO			
04	B. TUFL01012	01	HOSE	TUYAU	ROHR	TUBO	TUBO			
05	B. RCVR00172	02	HOSE FITTING	RACC. P. TUYAU	SCHLAUCH HALTER	PORTAMANGUERA	PORTAGOMMA			
06	T20460	01	PUMP	POMPE	PUMPE	BOMBA	POMPA			
07	E10698	01	FLEX. COUPLING	ACCOUPLEMENT FL	FLEX. KOPPELUNG	ACOPLADOR FLEX.	GIUNTO			
08	B. MOAC00039	01	MOTOR	MOTEUR	MOTOR	MOTOR	MOTORE			
09	T10255	01	FAN	HELICE	LUFTERRAD	TURBINA	VENTOLA			
10	B. CRVR00713	01	SUPPORT	SUPPORT	HALTER	SOPORTE	SUPPORTO			
11	C10323	01	SPIRAL FAN	ECROU VENTIL.	SCHNECKE VENTIL	ESPIRAL VENTIL.	COCLEA VENTIL.			
12	B. CRZN00665	01	SUPPORT	SUPPORT	HALTER	SOPORTE	SUPPORTO			
13	B. CRZN00666	01	SHUTTER	OBTURATEUR	SCHALTER	VENTANILLA	SERRANDA			
14	B. RCVR00180	01	HOSE	TUYAU	ROHR	TUBO	TUBO			
15	I30859	02	CONNECTOR	RACCORD	VERBIND. STUCK	RACORD	RACCORDO			
16	T20442	01	CABLE	CABLE	KABEL	CABLE	CAVO			
17	B. METR00024	02	COIL	BOBINE	SPULE	BOBINA	BOBINA			
18	B. CRDS00780	01	TURBULATOR	TURBULATEUR	TURBULATOR	TURBULADOR	TURBOLATORE			
19	T20370	01	NOZZLE	BUSE	DUSE	BOQUILLA	UGELLO			
20	B. CRDS00782	01	BRACKET	ENTRIER	BUGEL	GRAPA	STAFFA			
21	I30688	01	CONNECTOR	RACCORD	VERBIND. STUCK	RACORD	RACCORDO			
22	B. CRDS00777	01	FLANGE	BRIDE	FLANSCH	BRIDA	FLANGIA			
23	B. MEVR00320	01	ELECTRODES	ELECTRODES	ELEKTRODEN	ELECTRODOS	ELETTRODI			
24	I31034	01	NUT	ECROU	SCHRAUBMUTTER	TUERCA	DADO			
25	I30856	01	CONNECTOR	RACCORD	VERBIND. STUCK	RACORD	RACCORDO			
26	B. CRVR00706	01	COVER	COUVERCLE	DECKEL	TAPA	COPERCHIO			
27	B. CRAS00101	01	COVER	COUVERCLE	DECKEL	TAPA	COPERCHIO			
28	B. CRVR00705	01	CYLINDER	CYLINDRE	ZYLINDER	CIINDRO	CILINDRO			
29	B. CRZN00667	01	CYLINDER	CYLINDRE	ZYLINDER	CIINDRO	CILINDRO			
30	P20212	01	HEATING COIL	SERPENTIN	ROHRSCHLANGE	SERPENTIN	SERPENTINA			
31	B. CMSP00122	01	BOILER BOTTOM	FOND CHAUDIERE	KESSELBODEN	FONDO CALDERA	FONDO CALDAIA			
32	B. CRDS00764	01	COVER	COUVERCLE	DECKEL	TAPA	COPERCHIO			
33	M10804	04	TIE ROD	TIRANT	ZUGSTANGE	TIRANTE	TIRANTE			
34	L01235	01	COVER	COUVERCLE	DECKEL	TAPA	COPERCHIO			
35	I31037	02	RING NUT	FRETTE	NUTMUTTER	CASQUILLO	GHIERA			

EXPLODED VIEW

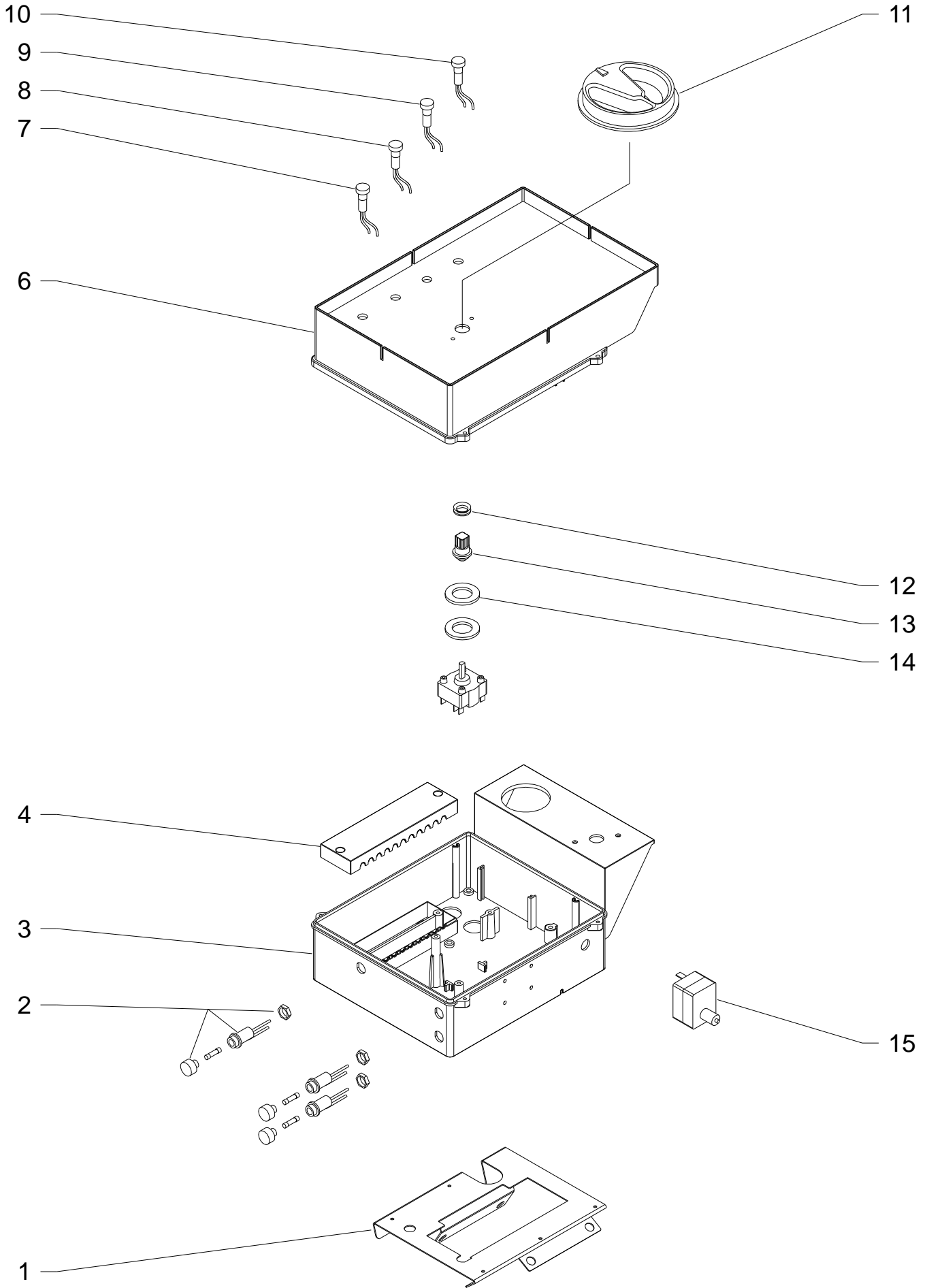


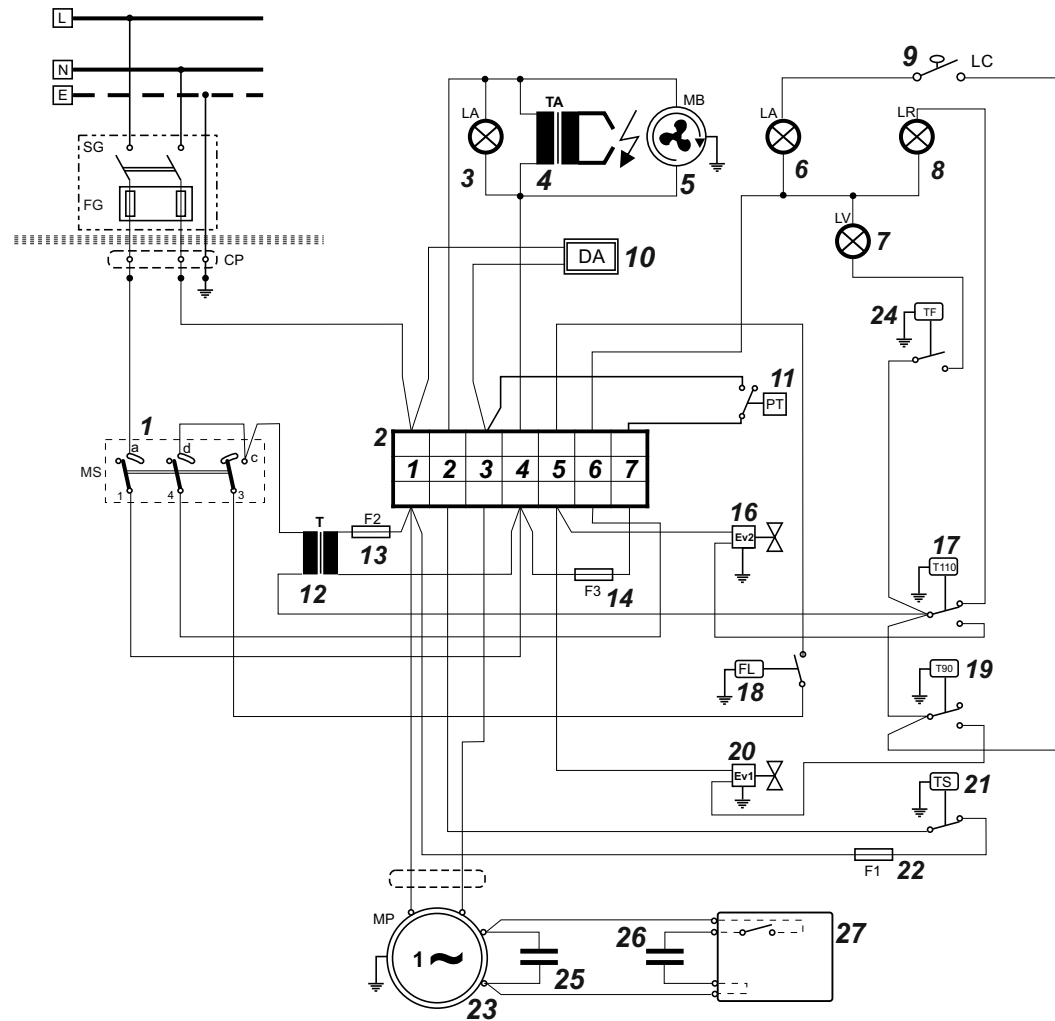
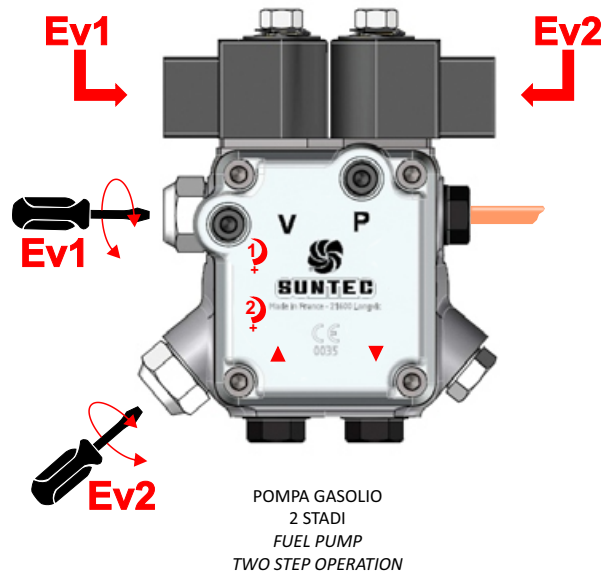
TABLE N° EXPL00164

SPARE PARTS LIST

EL. PANEL BWK

19/07/2017

REF	CODE	QTY	DESCRIPTION	DENOMINATION	BESCHREIBUNG	DESCRIPCION	DESCRIZIONE	TECNICAL FEATURES		
01	B. CRZN00672	01	SUPPORT	SUPPORT	HALTER	SOPORTE	SUPPORTO			
02	B. MEVR00326	03	FUSE-HOLDER	PORTE-FUSIBLES	SICHERUNGHALTER	PORTASFUSIBLES	PORTAFUSIBILE			
03	B. PLDS00310	01	BOX	BOÎTE	KASTEN	CAJA	SCATOLA			
04	B. PLDS00312	01	COVER	COUVERCLE	DECKEL	TAPA	COPERCHIO			
06	B. PLDS00311	01	COVER	COUVERCLE	DECKEL	TAPA	COPERCHIO			
07	B. MESG00007	01	GAUGE	JAUGE	MESSER	INDICADOR	SPIA	BIANCO-WHITE		
08	B. MESG00008	01	GAUGE	JAUGE	MESSER	INDICADOR	SPIA	VERDE-GREEN		
09	B. MESG00009	01	GAUGE	JAUGE	MESSER	INDICADOR	SPIA	ARANCIO-ORANGE		
10	B. MESG00010	01	GAUGE	JAUGE	MESSER	INDICADOR	SPIA	ROSSO-RED		
11	B. CMMP00166-1	01	KNOB	POIGNEE	VERSTELLGRIFF	MANOPOLA	MANOPOLA			
12	B. GUAR00112	01	GASKET	GARNITURE	DICHTUNG	GUARNICION	GUARNIZIONE			
13	B. CMMP00145-1	01	INSERT	INSERT	EINSATZ	INSERTO	INSERTO			
14	B. VTRD00068	02	WASHER	RONDELLE	DICHTUNG	ARANDELLA	RONDELLA			
15	B. MEIP00072	01	THERMOSTAT	THERMOSTAT	THERMOSTAT	TERMOSTATO	TERMOSTATO	SICUREZZA-SAFETY		



REF	CODE	QTY	DESCRIPTION	DENOMINATION	BESCHREIBUNG	DESCRIPCION	DESCRIZIONE	TECNICAL FEATURES		
01	B. MEIP00073	01	SWITCH	INTERRUPTEUR	SCHALTER	INTERRUPTOR	INTERRUETTORE			
02	E20317	01	CONNECTOR	CONNECTEUR	STECKER	CONECTADOR	CONNETTORE			
03	B. MESG00007	01	GAUGE	JAUGE	MESSER	INDICADOR	SPIA	BIANCO-WHITE		
04	B. METR00018	01	TRANSFORMER	TRANSFORMATEUR	TRANSFORMER	TRANSFORMADOR	TRASFORMATORE			
05	B. MOAC00039	01	MOTOR	MOTEUR	MOTOR	MOTOR	MOTORE			
06	B. MESG00009	01	GAUGE	JAUGE	MESSER	INDICADOR	SPIA	ARANCIO-ORANGE		
07	B. MESG00008	01	GAUGE	JAUGE	MESSER	INDICADOR	SPIA	VERDE-GREEN		
08	B. MESG00010	01	GAUGE	JAUGE	MESSER	INDICADOR	SPIA	ROSSO-RED		
09	B. MEIP00074	01	SWITCH	INTERRUPTEUR	SCHALTER	INTERRUPTOR	INTERRUETTORE			
10	I10703	01	DISPENSER	DISTRIBUTEUR	DISPENSER	DISPENSADOR	DOSATORE			
11	B. MEIP00075	01	PRESSURE SWITCH	PRESSOSTAT	DRUCKSCHALTER	INTERR. PRESIÓN	PRESSOSTATO			
12	B. METR00020	01	TRANSFORMER	TRANSFORMATEUR	TRANSFORMER	TRANSFORMADOR	TRASFORMATORE			
13	E10326	01	FUSE	FUSIBLE	ABSCHMEL.HERUNG	FUSIBLE	FUSIBILE	0,5 A		
14	E10328	01	FUSE	FUSIBLE	ABSCHMEL.HERUNG	FUSIBLE	FUSIBILE	1,6 A		
16	B. METR00024	01	SOLENOID	ELECTROVANNE	SOLENOID	SOLENOIDE	ELETTROVALVOLA			
17	B. MEIP00051-	01	THERMOSTAT	THERMOSTAT	THERMOSTAT	TERMOSTATO	TERMOSTATO	110°C		
18	B. MEFL00007	01	FLOW SWITCH	FLUSSOSTAT	STROMUNGSWACHTE	INT. DE FLUJO	FLUSSOSTATO			
19	B. MEIP00054-	01	THERMOSTAT	THERMOSTAT	THERMOSTAT	TERMOSTATO	TERMOSTATO	90°C		
20	B. METR00024	01	SOLENOID	ELECTROVANNE	SOLENOID	SOLENOIDE	ELETTROVALVOLA			
21	B. MEIP00072	01	THERMOSTAT	THERMOSTAT	THERMOSTAT	TERMOSTATO	TERMOSTATO	SICUREZZA-SAFETY		
22	E10328	01	FUSE	FUSIBLE	ABSCHMEL.HERUNG	FUSIBLE	FUSIBILE	1,6 A		
23	B. MTPM00021	01	MOTOR-PUMP	MOTOPOMPE	MOTOR-PUMPEN	MOTOBOMBA	MOTORE-POMPA			
24	B. MEIP00079	01	THERMOSTAT	THERMOSTAT	THERMOSTAT	TERMOSTATO	TERMOSTATO			



BIEMMEDUE S.p.A. - Via Industria, 12 - 12062 - CHERASCO (CN) - Italy
Tel. +39 0172 486111 - Fax +39 0172 488270
www.biemmedue.com - e-mail: bm2@biemmedue.com